

International Tendency of

SOFT FURNISHING

HOME DECORATIONISM

国际软装趋势——室内装饰主义

Edited by HI-DESIGN PUBLISHING
Phoenix Science Press





LOCATION
Mexico City, Mexico

DEPARTAMENTO POLANCO 1

DESIGNER *Claudia López Duplan*

DESIGN COMPANY *López Duplan Arquitectos*

AREA: 170 m²

PHOTOGRAPHER *Héctor Armando Herrera*

The apartment is located in Polanco, in Mexico City, just across from a park, so the views are mostly of fantastic tree tops. The apartment has one level with wide spaces that allowed making a proper distribution of the areas, resulting in a casual, very warm and open entrance.

The remodeling project of this space considered a master bedroom for one person and a guest room. It also includes a library with enough privacy that, when necessary, may also be an additional guest room. Because of its location, the entrance had lack of natural light. This situation was solved with a painted white lamps were installed and the walls were painted in an intense red color that unifies the walls and doors, generating an ample single space. All the floors, except for rooms and bathrooms, are of a light-colored wood, the same shade

was maintained in all the custom made furniture. The painted was used as high as possible to avoid affecting the amplitude of the space.

The intensity and brightness of the entrance channels with the red of the walls. Thus, a neutral color was selected to make the most of the natural light. We are also some red accents in the same color of the entrance but the light is indirect and where the height was not sufficient they were used in furniture and walls. Some walls have accent lights to emphasize the space. There are also some suspended lights. Among the living room and entrance is a large corker, which was covered with a sunburst mosaic to create a great central light object.



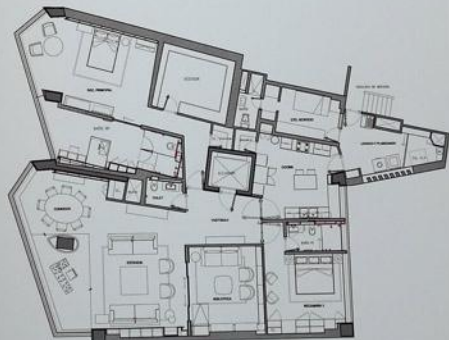
Polanco 1 24





以离奇甚至墨西哥的埃斯科拉，位于一个公顷的街区，所以从室内向室外加宽进去，可以欣赏到周围的美景。这里只有一层，但室内空间宽敞，更确切地说是在这个整体空间内进行合理的区域划分，以打造一个开放、休闲且温馨感十足的空间氛围。这里目的应是在为包括对一两个人使用的主卧室、一间客房和一间私密性十足的藏书室（如果可能的话，还可以作为一间额外的客房）进行改造，由于特殊位置的朝向，门厅缺少自然光线的照射，这一问题通过有装饰性的天花板内嵌灯内部照明灯打亮了解决，墙壁选择红色的漆饰，统一了墙壁灯的颜色，使室内形成了一个宽敞的单一空间。除了客厅和卧室之外，其他空间内的地面都使用了浅色木料，相同的色系也被应用在了所有定制家具上，装饰画能够安装在尽可能高的位置，以免破坏空间的整体感。

色彩装饰，明亮的门厅与其他区域相融合，在走廊区域中选择了中性的配色方案，以充分利用自然光线。同时也在一些区域中使用了与门厅一样的红色的配色。人造光线则选择了间接照明，当室的高度不足以时，便将它们安装在墙壁或天花板。一些墙壁上安装了薄光灯以凸显整个空间，同时安装了一些吊灯，在起居室和餐厅中使用了十八瓦的圆柱形照明灯，表面覆盖了透光材料，使其形成一个优雅的中心装饰物。



PLANTA



力
一
别
Y
a
r
d
r





力
别
Y
B
K
D
R